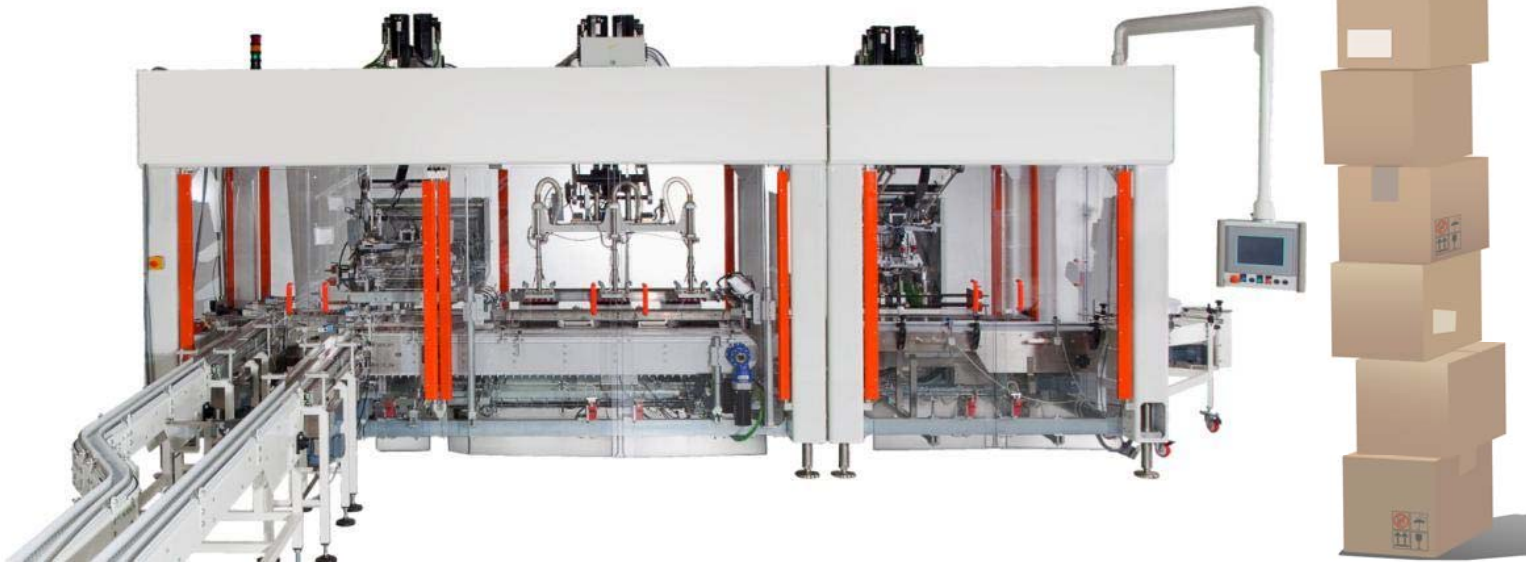


**SECONDARY
PACKAGING**

PERFORMANCE S334

Forms, loads and closes
cartons and trays



a tri-functional cell configuration

A single machine formed by one, two or three modules, designed to form, load and lid/close boxes and displays or american cases without the space requirements of one/two/three separate machines.

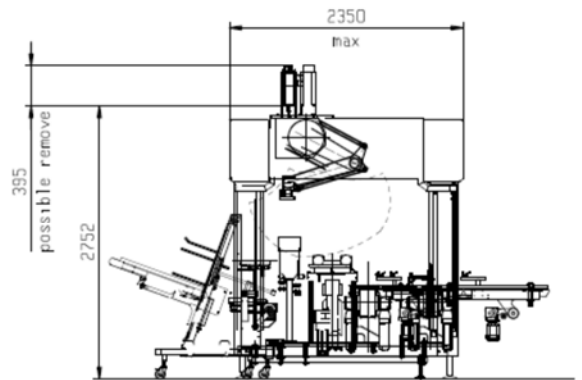
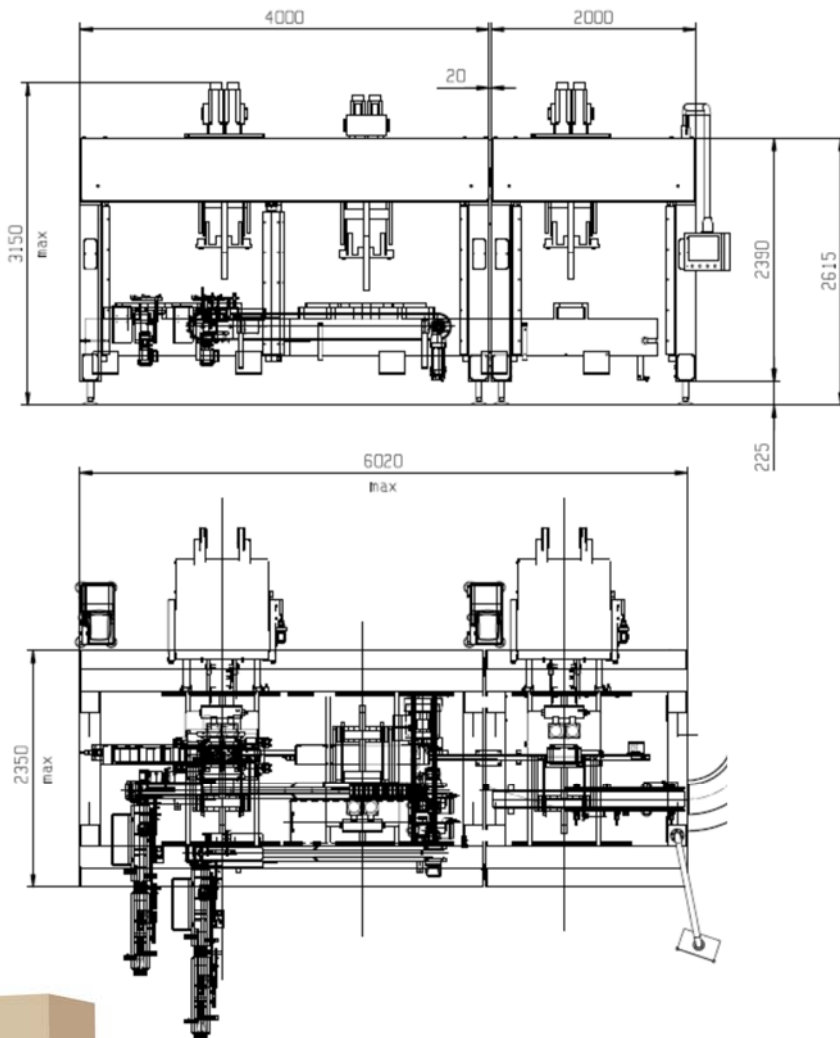
Its completely modular structure allows a compact design and the ability to work even with difficult packaging patterns and layouts.

Suitable for a wide products range, including candy bars, bags, jars, pouches, boxes and many other products in the food, cosmetic and pharmaceutical fields.

STANDARD FEATURES

- Top-Loading Robot with 2 controlled axis, equipped with anti-collision device
- Over-head on board electrical Cabinet
- HMI touch panel interface for recipe selection, fault display and parameter editing
- Common frame for all machine modules in electro-welded painted structure with floor levelling feet
- Safety guard door system in transparent polycarbonate, located on the external perimeter of the Cell

DUAL INFEED VERSION



Lidding station



Tray filling station with vertical collating unit



Tray erecting station



Example of a layout.

This unit is suitable for high speed packaging of candy bars including the following functions:

- Carton forming from flat blanks
- Infeed bar collation via vertical collating unit
- Carton filling by top-loading robot
- Carton sealing