

MOULDING

MULTICAVEMIL

Continuous-motion moulding lines

High level of performance and reliability are the distinctive features of these plants, with productions ranging from the small 5gr. piece to the 5kg. chocolate block.



Speed: up to 70 moulds/min

STANDARD FEATURES

Its modular construction allows:

- Highly reliable and efficient machines 24 x 7
- Short delivery time
- Quick installation and faster production start-up
- Easy accessibility to all the plant's parts for cleaning and maintenance
- Low-cost maintenance
- High durability components
- Fast and easy format change

Highly capacity lines with the following features:

- Total reliability and high efficiency typical of the continuous moving equipment
- Smooth and precise mould transfer with patented mould carrier with pins
- Mould transport completely servodriven
- Possibility to insert standard piston-moulding depositors, CORE™ depositor and rotary-moulding depositors servodriven
- Polygonal demoulding for an absolute smooth product transfer
- Electronically programmable recipes
- Easy management of a wide variety of technologies
- Energy savings
- Possibility to manufacture customized lines adaptable to the final users' requirements

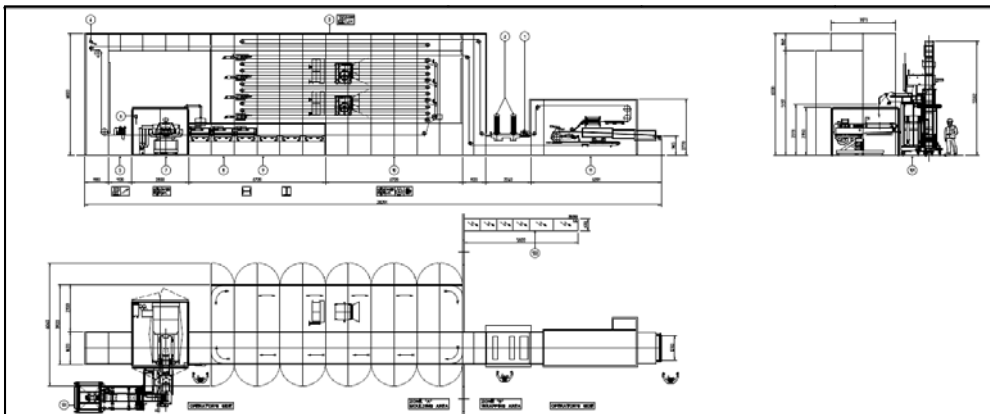
Possibility to manufacture customized lines adaptable to the final users' requirements

- Moulds heating (air-heating box or infrared)
- Optical or mechanical mould checking
- Different kind of depositors (Pistons, Rotary or CORE)
- Traditional shell forming or fast shell
- Different configuration for bottom area (blade scraper or licking roller)
- Demoulding unit (traditional or robotic)

Typical Moulding Line production:

- Solid chocolate
- Solid chocolate with pre-mixed ingredients
- One-shot products
- Filled products
- Booked products (surprise eggs, filled small eggs, filled spherical pralines, ...)
- Products with various inclusions and inserts (wafer, biscuits, nuts, crispies, cherries, toys, ...)
- Decorated products

SOLID OR ONE-SHOT CONFIGURATION



MOULDS DIMENSIONS

650 TYPE	1200 TYPE
650 x 210	1200 x 210
650 x 234	1200 x 234
650 x 260	1200 x 260
650 x 285	1200 x 285
650 x 310	1200 x 310
650 x 330	1200 x 330
650 x 356	1200 x 356